

**GENERAL NOTES:**

FENCE FABRIC SHALL BE MINIMUM 32" WIDTH AND SHALL HAVE A MINIMUM OF 6 LINE WIRES WITH 12" STAY SPACING.

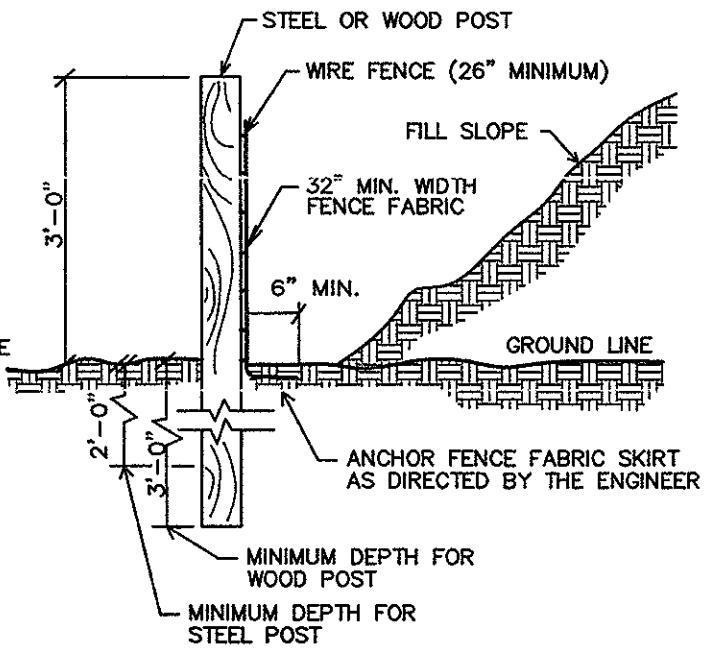
BURLAP SHALL BE 7-1/2 oz. WEIGHT AND A MINIMUM OF 32" IN WIDTH. BURLAP SHALL BE FASTENED ADEQUATELY TO THE FABRIC AS DIRECTED BY THE ENGINEER. MIRAFI 140 OR EQUIVALENT MAY ALSO BE USED.

STEEL POST SHALL BE 5'-0" IN HEIGHT AND BE OF THE SELF- FASTENER ANGLE STEEL TYPE.

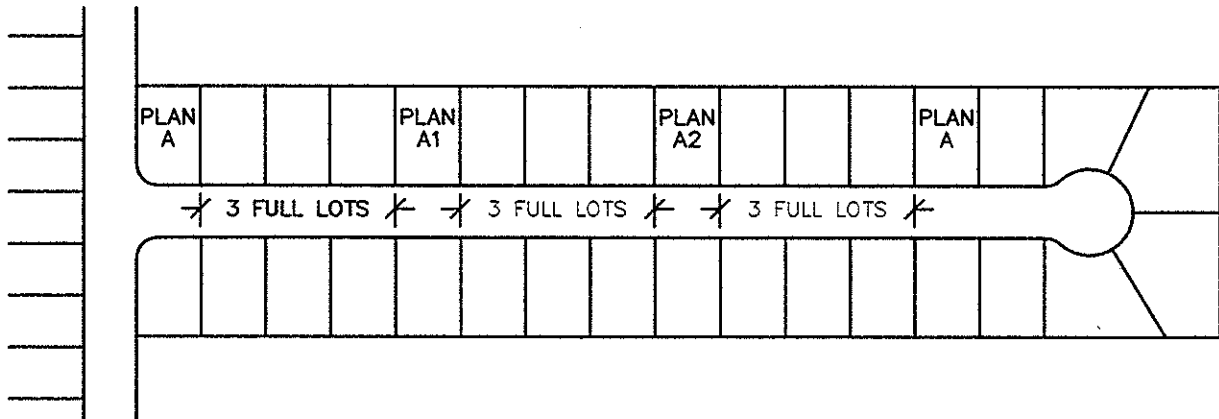
WOOD POST SHALL BE 6 TO 7 FEET IN HEIGHT AND 3 TO 4 INCHES IN DIAMETER.

SOURCE:  
 CITY OF GREENVILLE, N.C. MANUAL OF STANDARD DESIGNS AND DETAILS STD. NO. 20.05

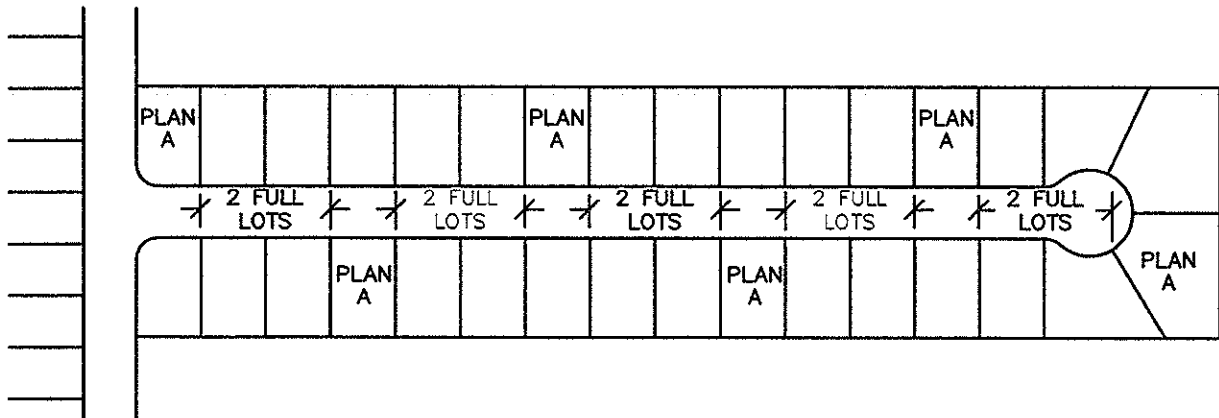
**NOTE FOR ILLUSTRATION PURPOSES ONLY. REFER TO CONSTRUCTION PLANS FOR COMPLETE DETAILS AND SPECIFICATIONS.**



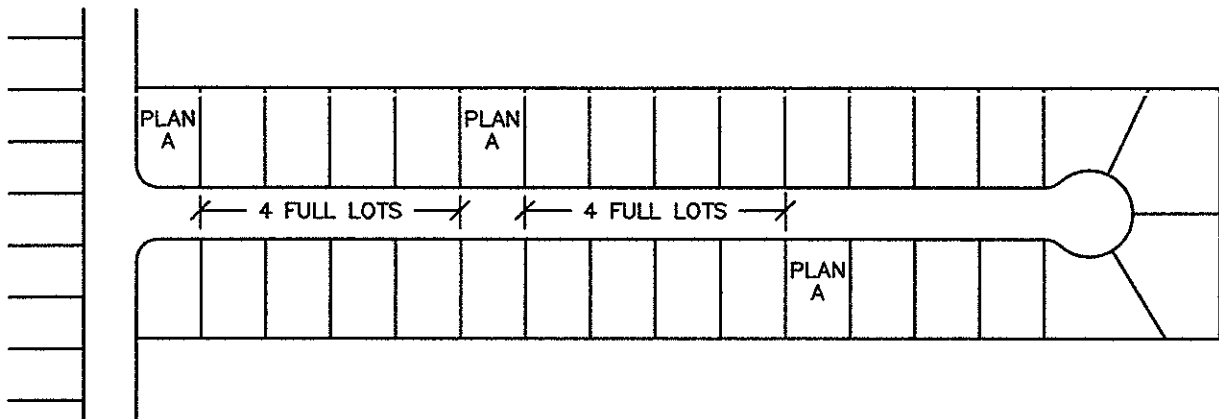
**1 SAME PLAN, DIFFERENT ELEVATION, SAME SIDE**



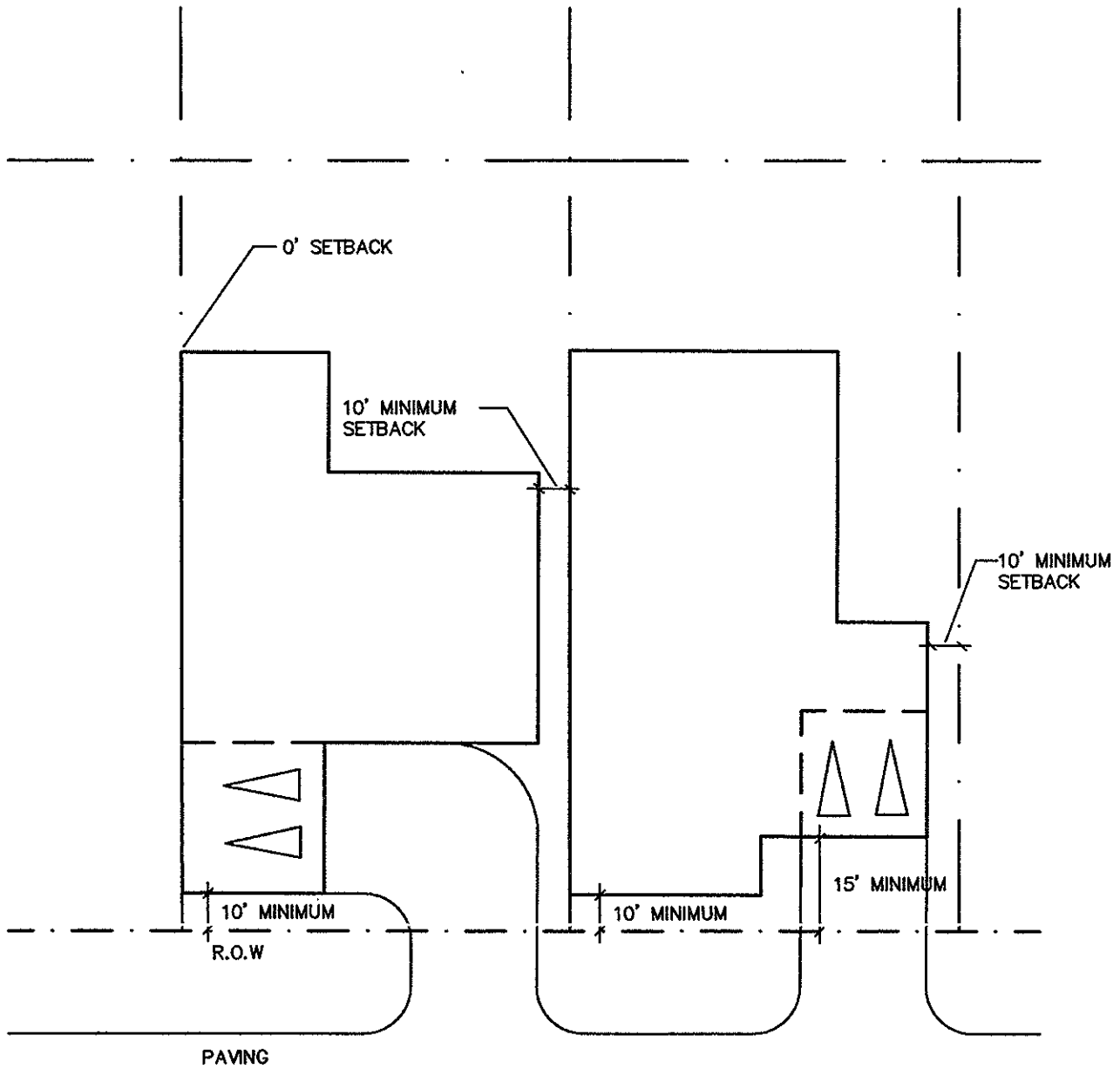
**2 SAME PLAN, DIFFERENT ELEVATION, OPPOSITE SIDE**



**3 SAME PLAN, SAME ELEVATION, SAME OR OPPOSITE SIDE**



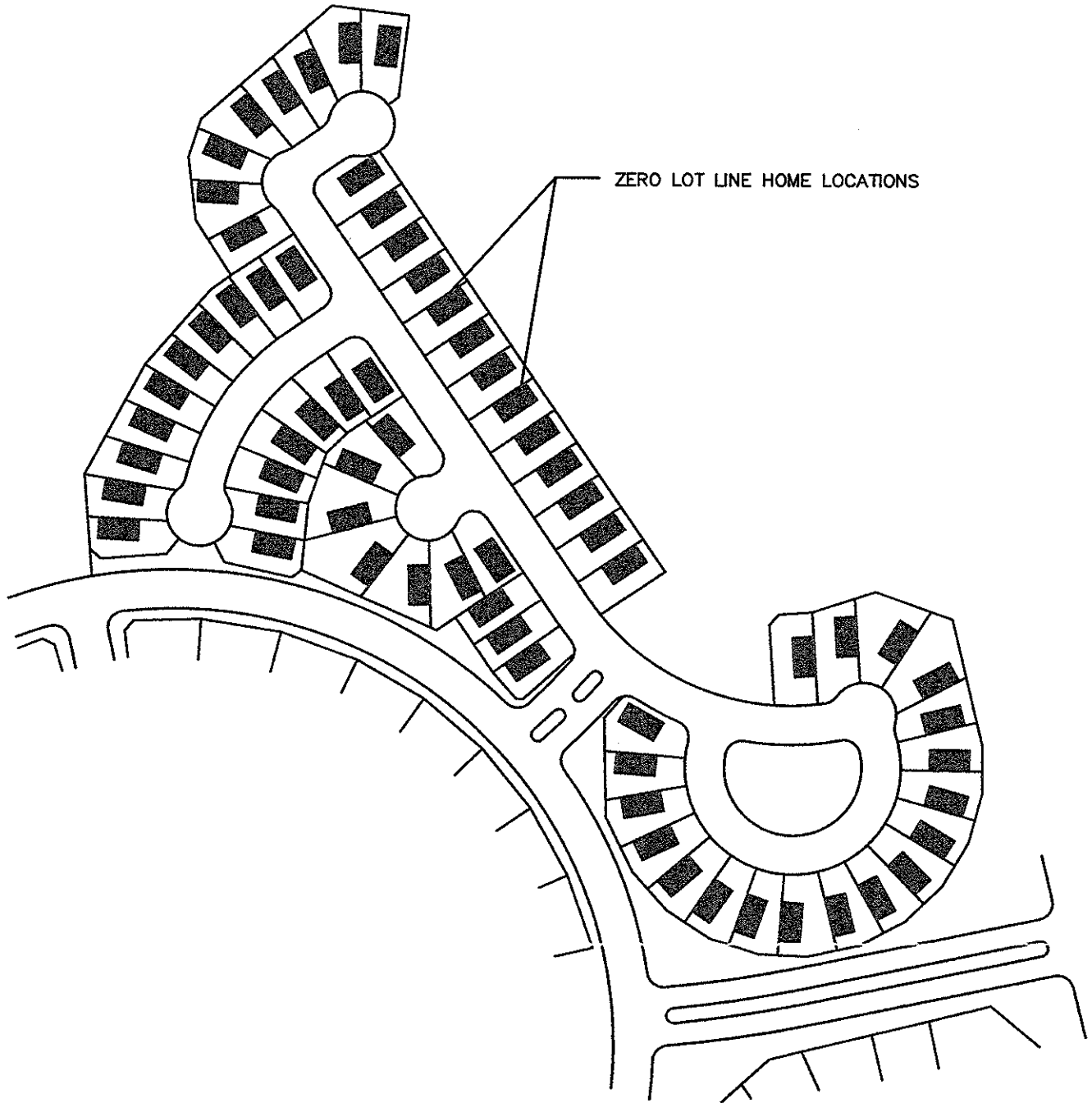
**NOTE: FOR ILLUSTRATION PURPOSES ONLY.  
REFER TO CONSTRUCTION PLANS FOR  
COMPLETE DETAILS AND SPECIFICATIONS.**



**NOTE: FOR ILLUSTRATION PURPOSES ONLY.  
REFER TO CONSTRUCTION PLANS FOR  
COMPLETE DETAILS AND SPECIFICATIONS.**

**ZERO LOT LINE SCHEMATIC -  
PATIO PRODUCT**

**ILLUSTRATION IV-2**

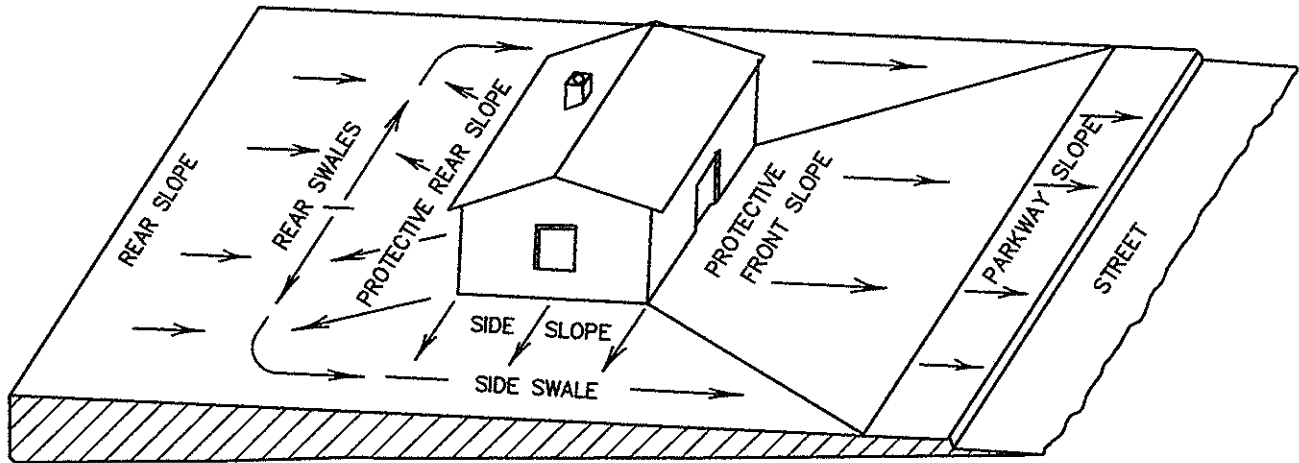


**NOTE FOR ILLUSTRATION PURPOSES ONLY.  
REFER TO CONSTRUCTION PLANS FOR  
COMPLETE DETAILS AND SPECIFICATIONS.**

---

**ZERO LOT LINE  
HOUSE LOCATION PLAN**

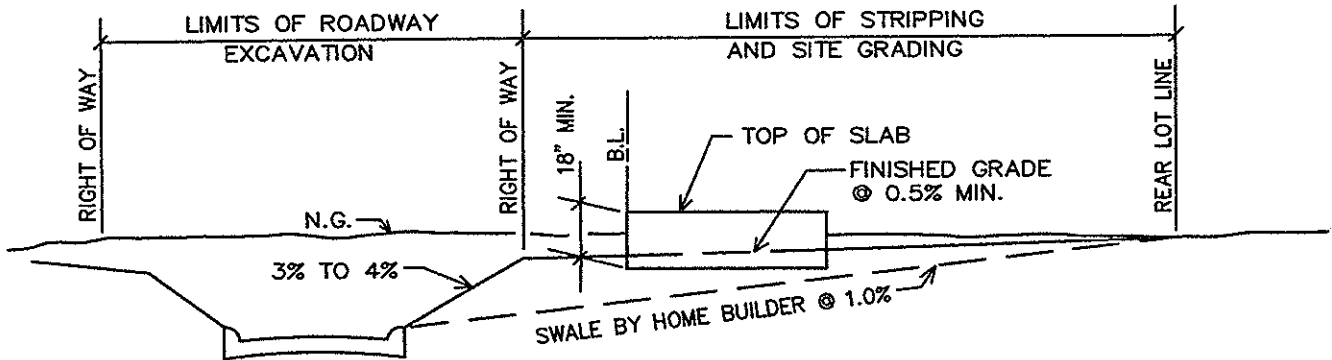
**ILLUSTRATION IV-3**



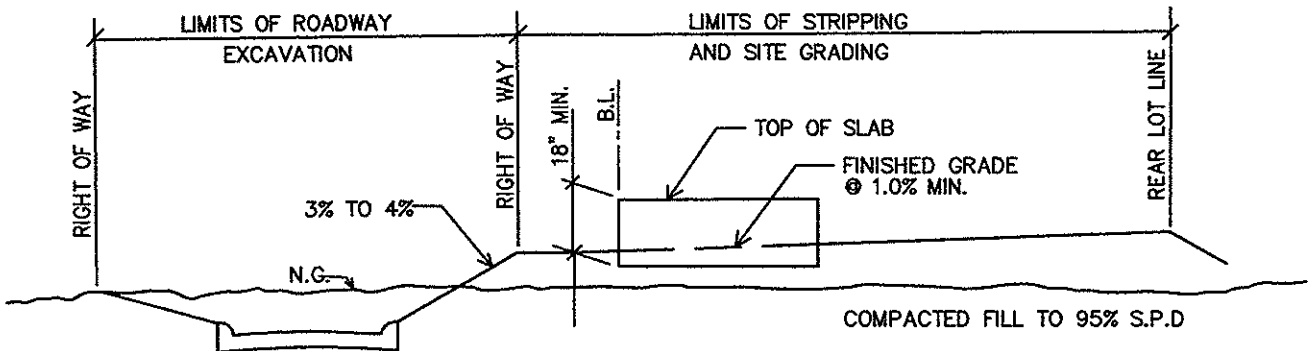
NOTE: ALL DRAINAGE TO STREET SWALES, SIDE SLOPES AND PROTECTIVE SLOPES BY HOME BUILDER

NOTE: FOR ILLUSTRATION PURPOSES ONLY. REFER TO CONSTRUCTION PLANS FOR COMPLETE DETAILS AND SPECIFICATIONS.

**FHA LOT GRADING TYPE "A"**

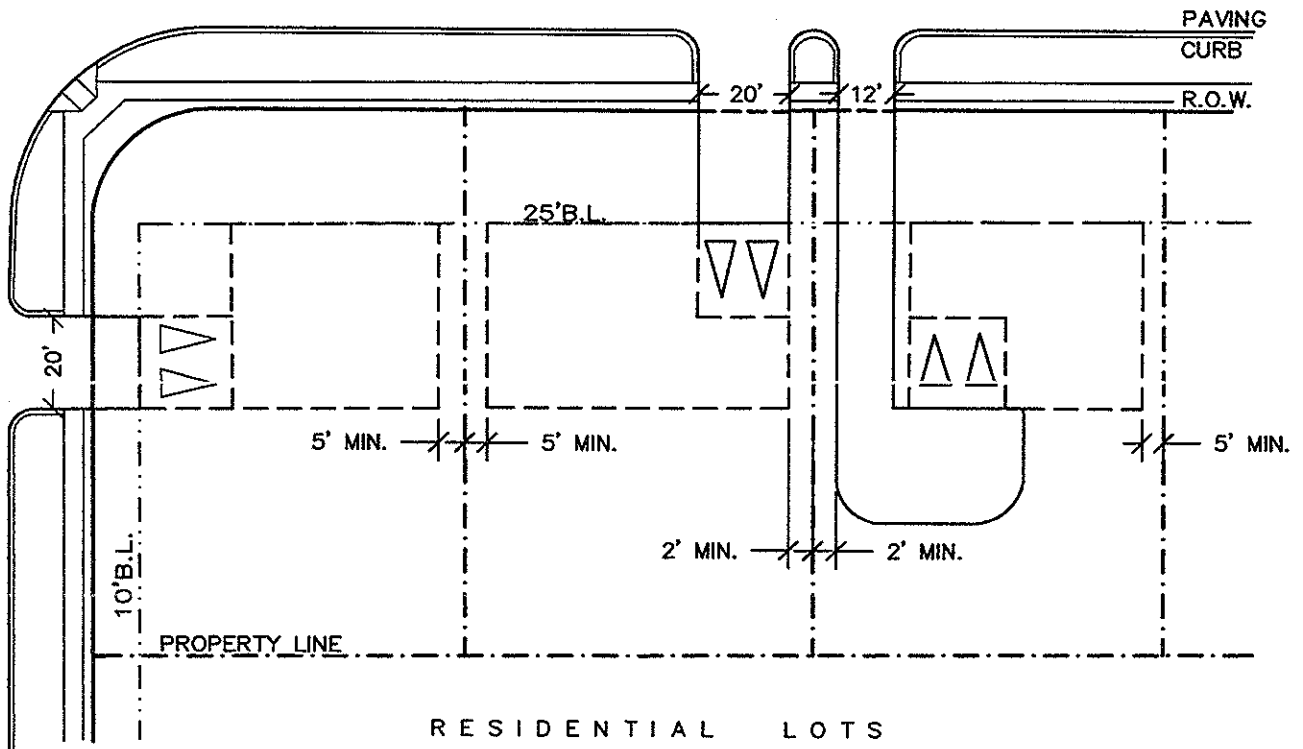
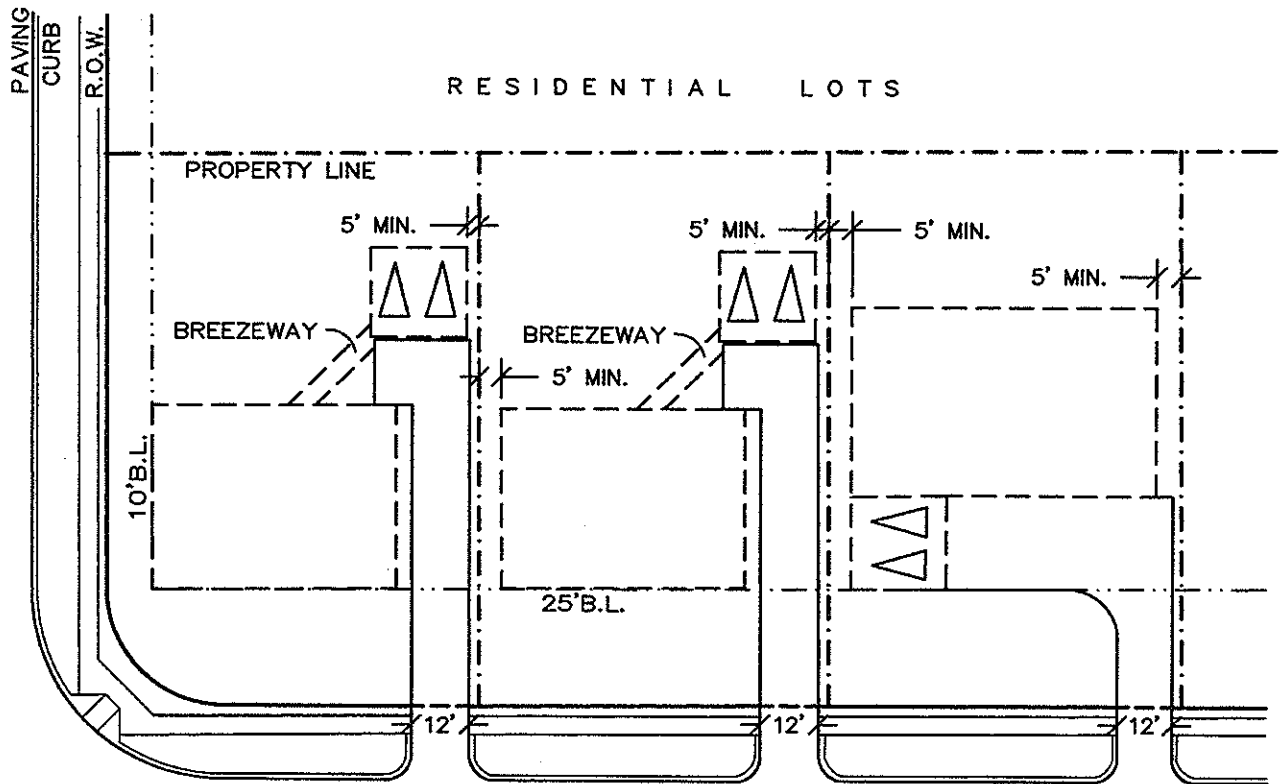


**TYPICAL GRADING ON LOTS WITH TOP CURB CUTS GREATER THAN 18"**  
**FHA BLOCK GRADING, TYPE "T"**



**TYPICAL GRADING ON LOTS WITH TOP CURB CUTS LESS THAN 18"**  
**FHA BLOCK GRADING, TYPE "T"**

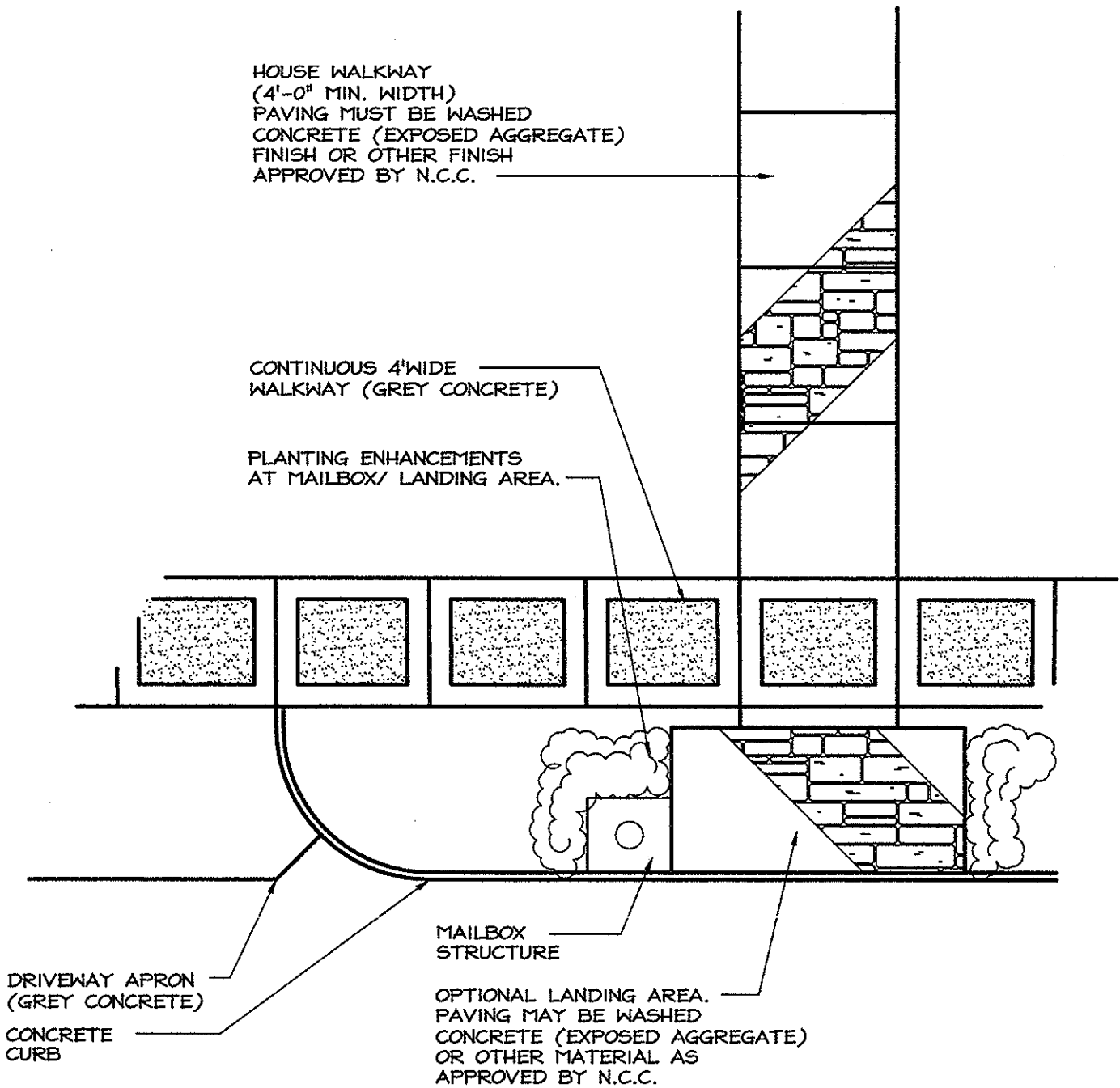
NOTE: FOR ILLUSTRATION PURPOSES ONLY. REFER TO CONSTRUCTION PLANS FOR COMPLETE DETAILS AND SPECIFICATIONS.



**NOTE: FOR ILLUSTRATION PURPOSES ONLY.  
REFER TO CONSTRUCTION PLANS FOR  
COMPLETE DETAILS AND SPECIFICATIONS.**

## **GARAGE AND DRIVEWAY PLACEMENT**

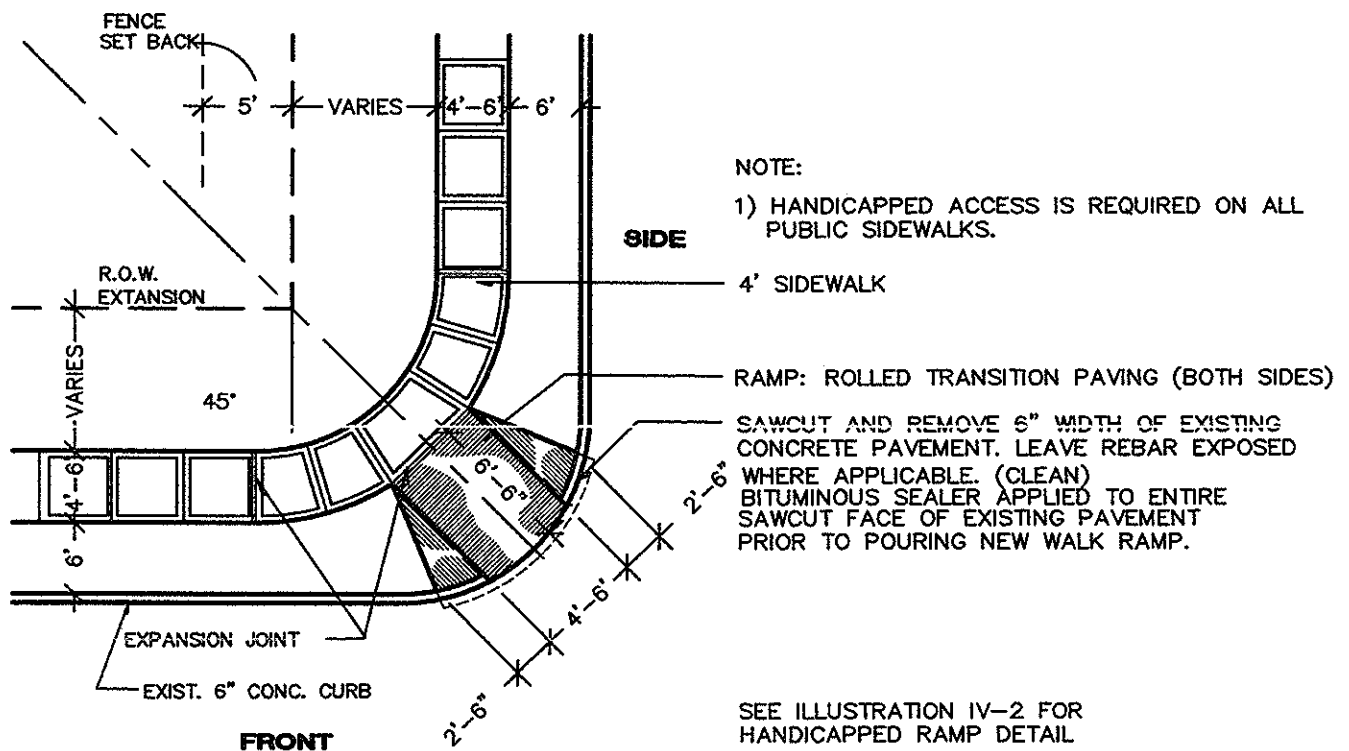
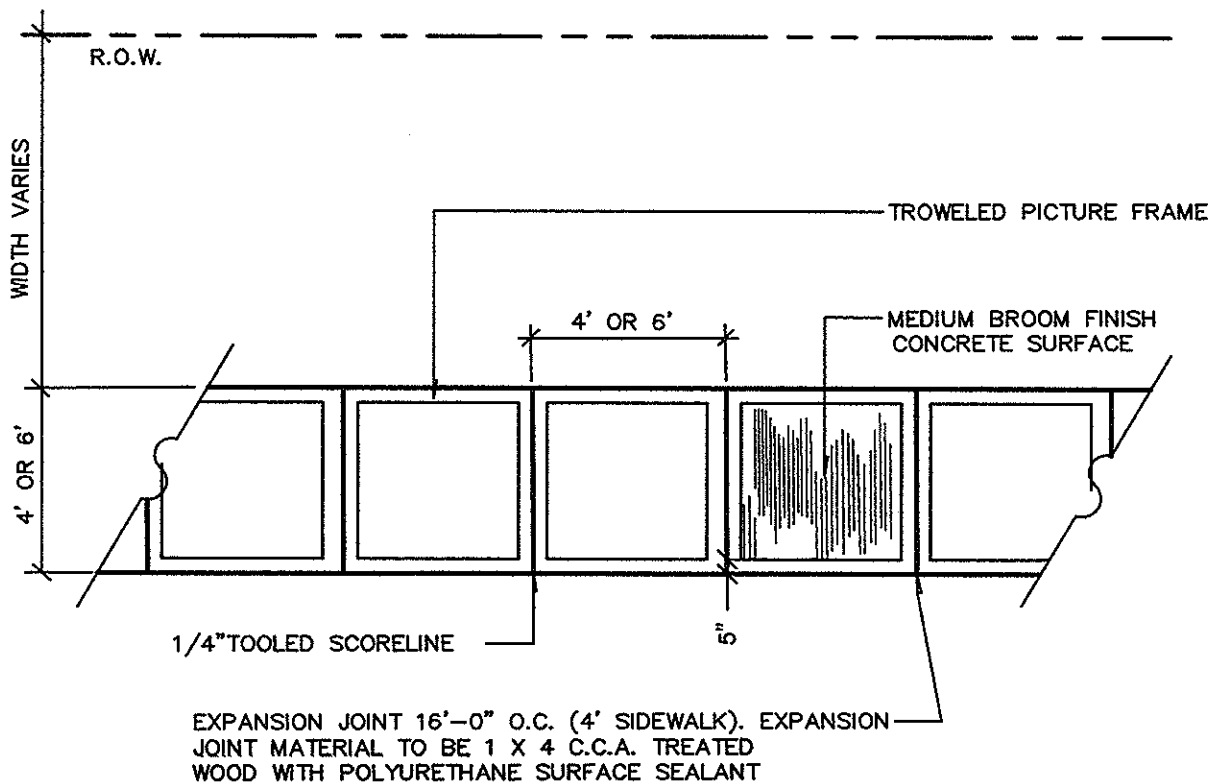
**ILLUSTRATION V-2**



**NOTE FOR ILLUSTRATION PURPOSES ONLY.  
REFER TO CONSTRUCTION PLANS FOR  
COMPLETE DETAILS AND SPECIFICATIONS.**

**WALKWAY LANDING**

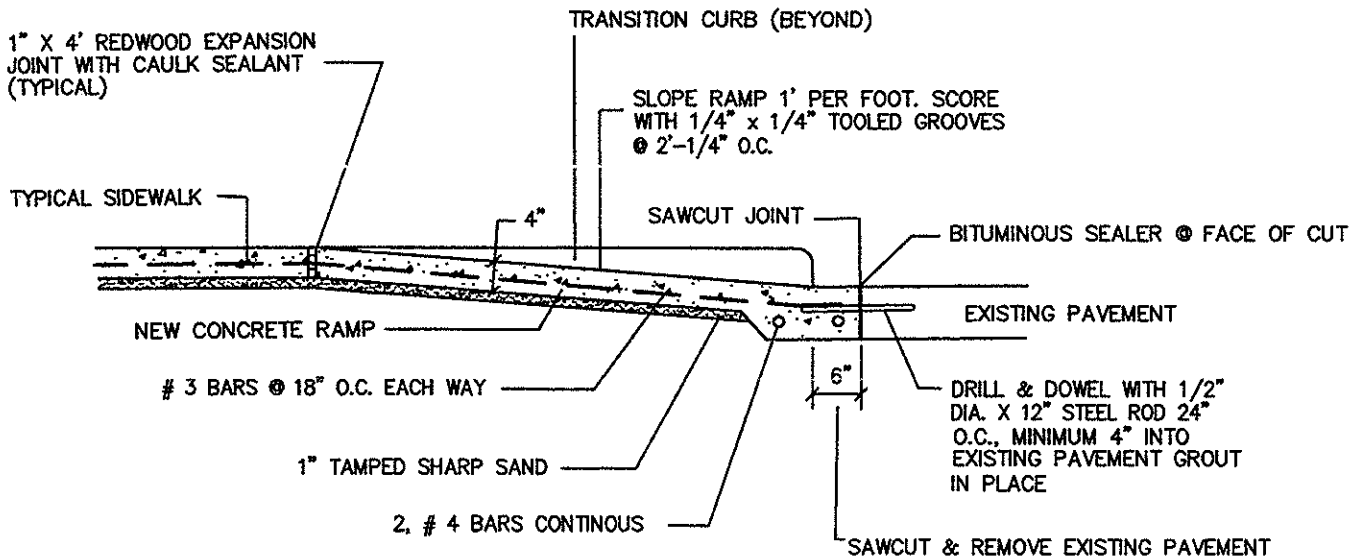
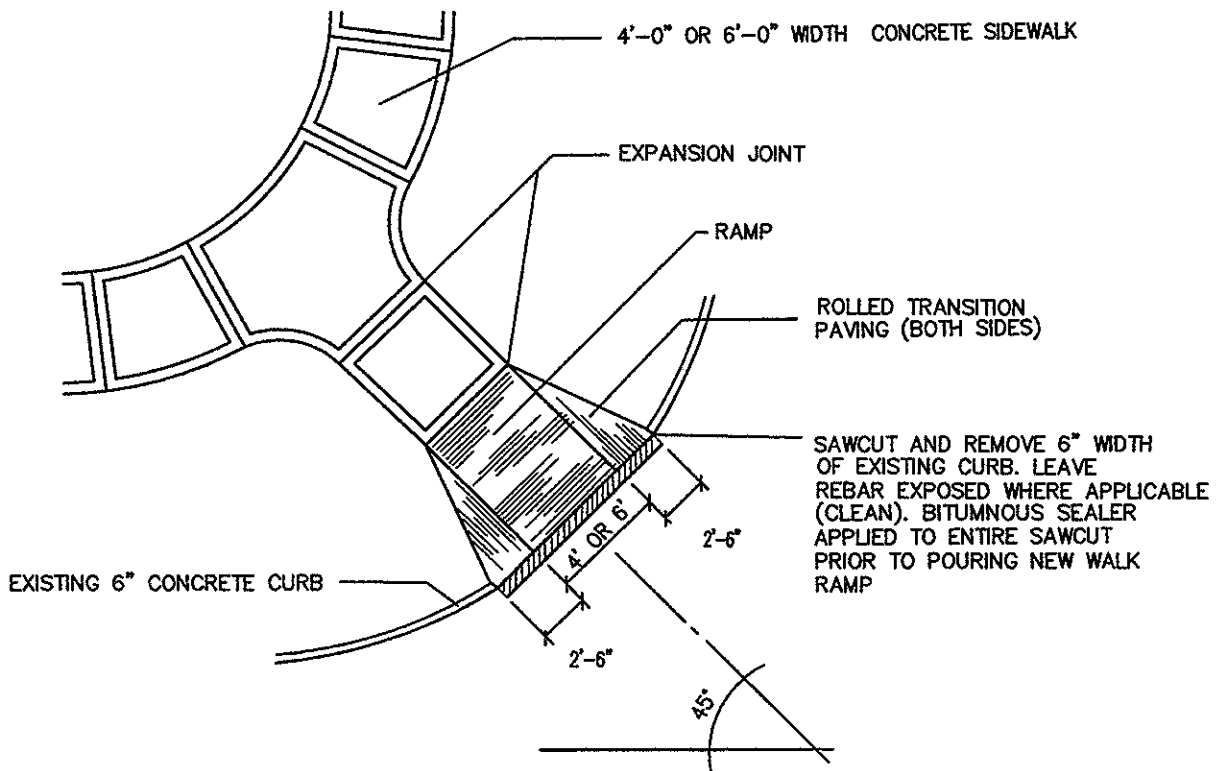
**ILLUSTRATION V-3**



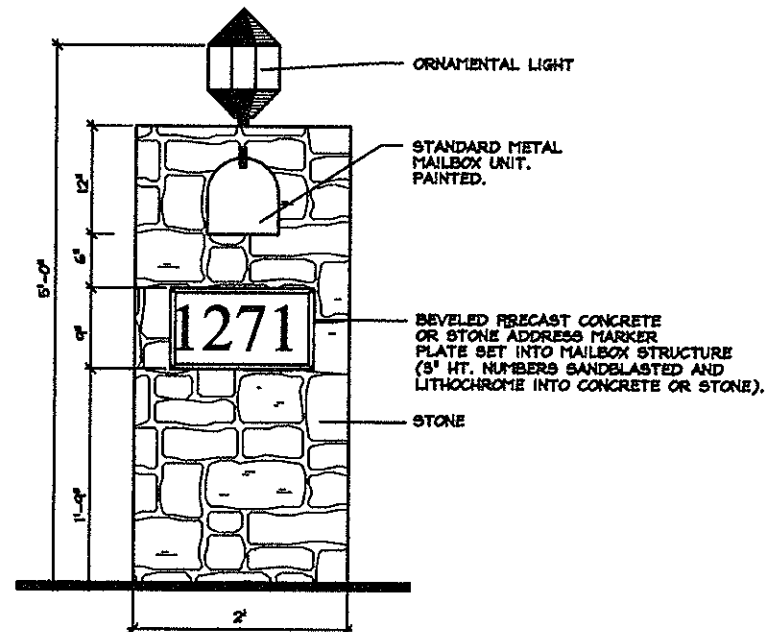
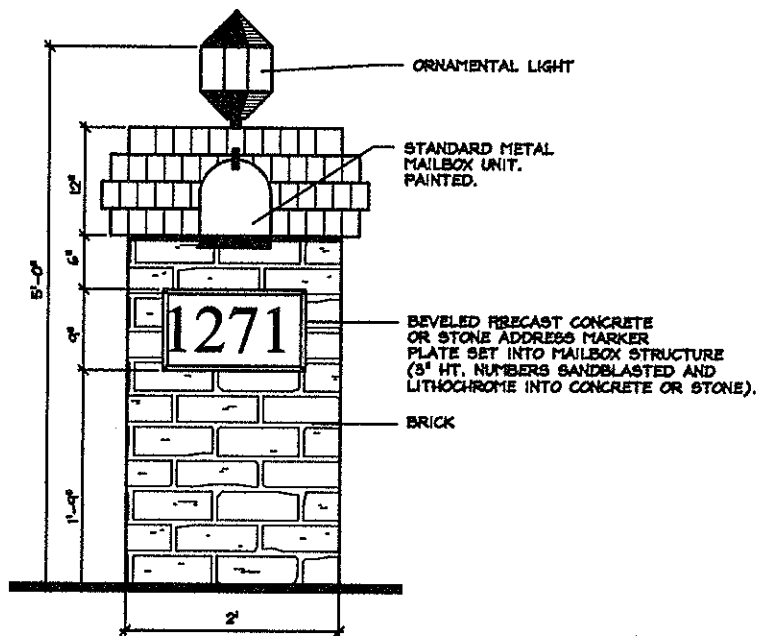
NOTE: FOR ILLUSTRATION PURPOSES ONLY.  
REFER TO CONSTRUCTION PLANS FOR  
COMPLETE DETAILS AND SPECIFICATIONS.

**SIDEWALK DETAIL**

**ILLUSTRATION V-4**



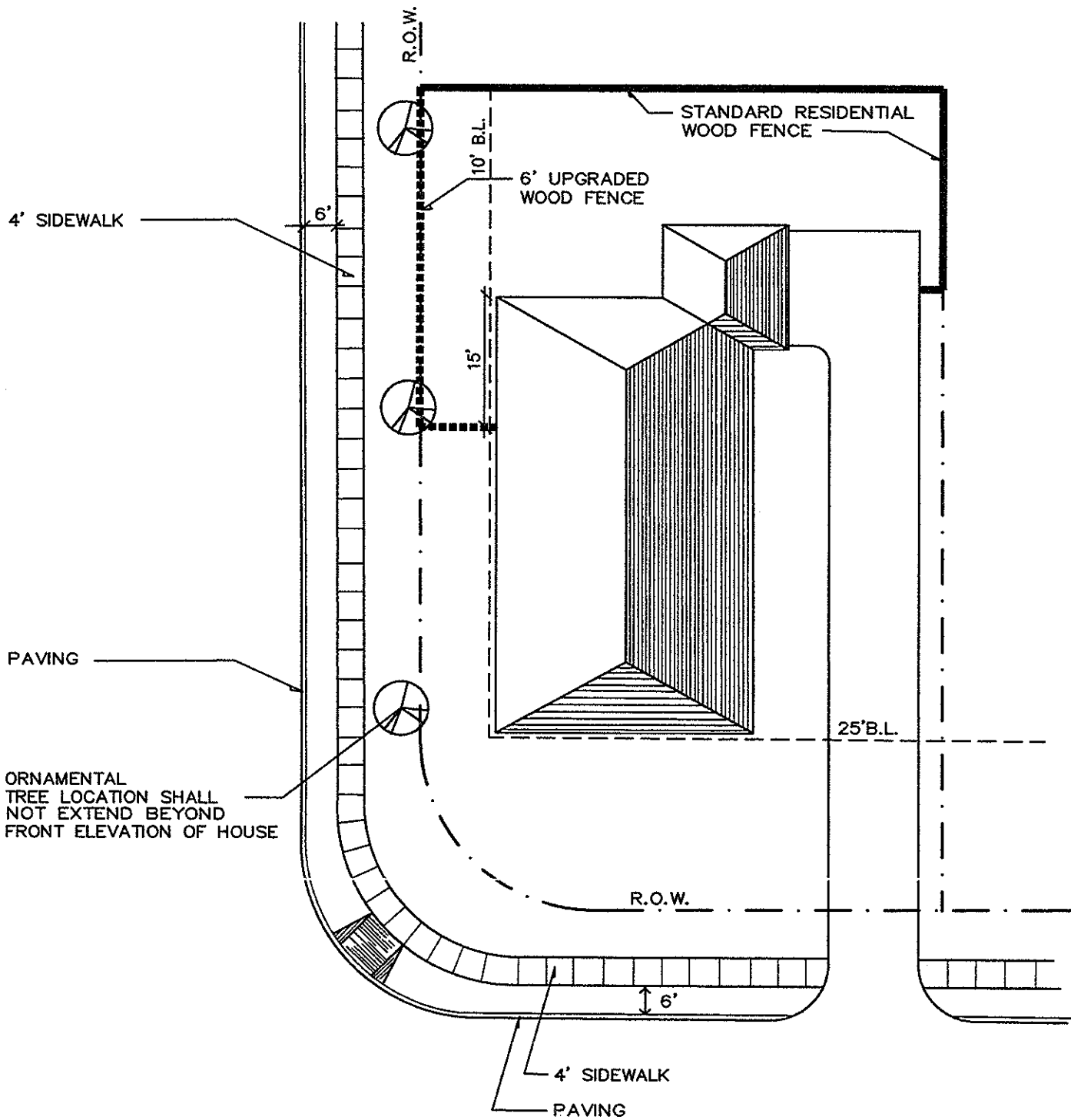
**NOTE: FOR ILLUSTRATION PURPOSES ONLY.  
REFER TO CONSTRUCTION PLANS FOR  
COMPLETE DETAILS AND SPECIFICATIONS.**



NOTE: FOR ILLUSTRATION PURPOSES ONLY.  
REFER TO CONSTRUCTION PLANS FOR  
COMPLETE DETAILS AND SPECIFICATIONS.

MAIL BOX DETAIL

ILLUSTRATION V-6



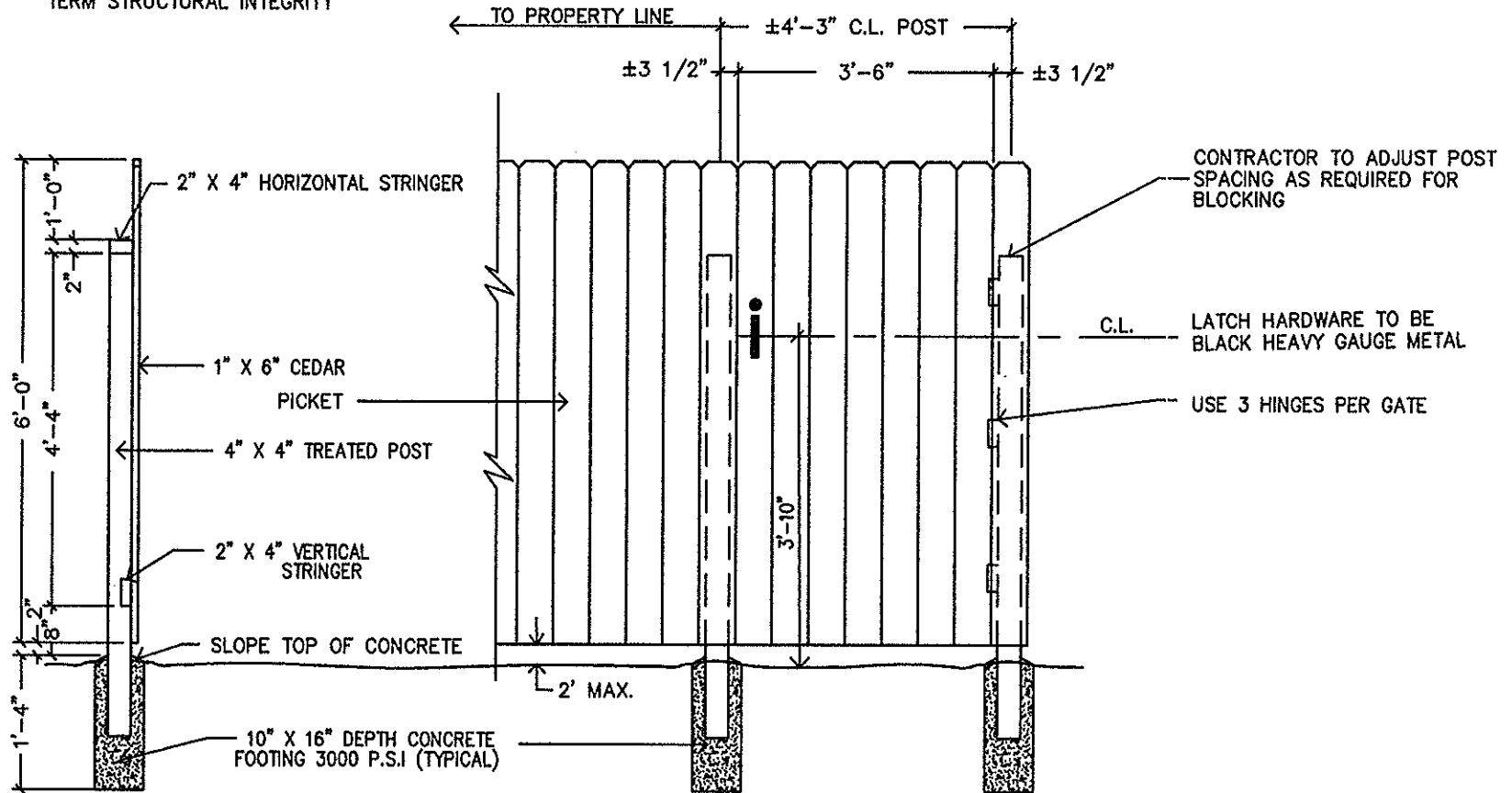
**NOTE FOR ILLUSTRATION PURPOSES ONLY.  
REFER TO CONSTRUCTION PLANS FOR  
COMPLETE DETAILS AND SPECIFICATIONS.**

**CORNER LOT LANDSCAPING**

**ILLUSTRATION V-7**

NOTES:

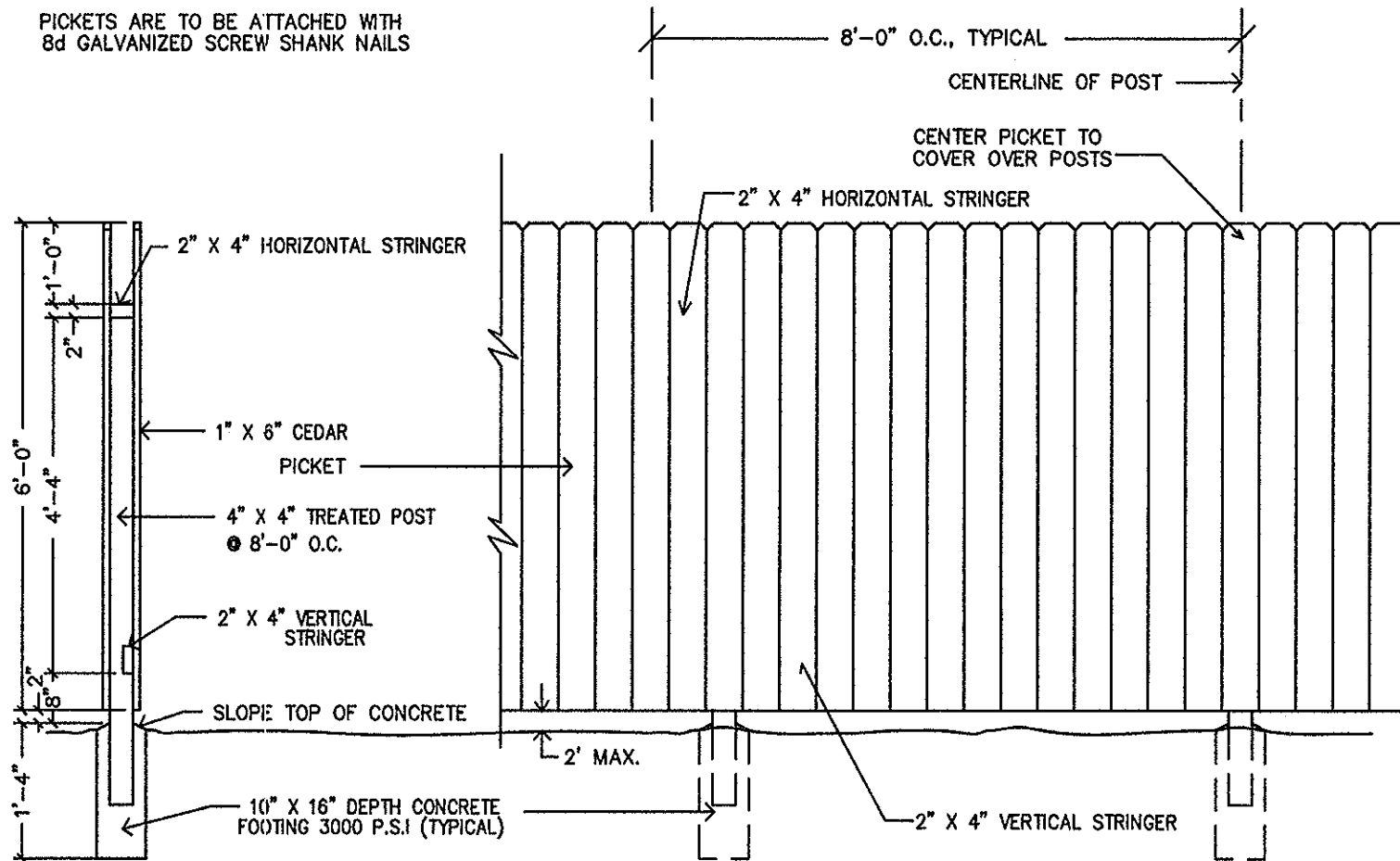
- 1) VERTICAL PICKETS TO BE NO.1, 1" X 6" CEDAR NOTCHED TOP PICKETS
- 2) ALL OTHER WOOD TO BE PRESSURE TREATED PINE
- 3) PICKETS ARE TO BE ATTACHED WITH 8d GALVANIZED SCREW SHANK NAILS
- 4) ADD VERTICAL SUPPORTS, CROSSBRANCHING & METAL PLATES AS REQUIRED FOR LONG-TERM STRUCTURAL INTEGRITY



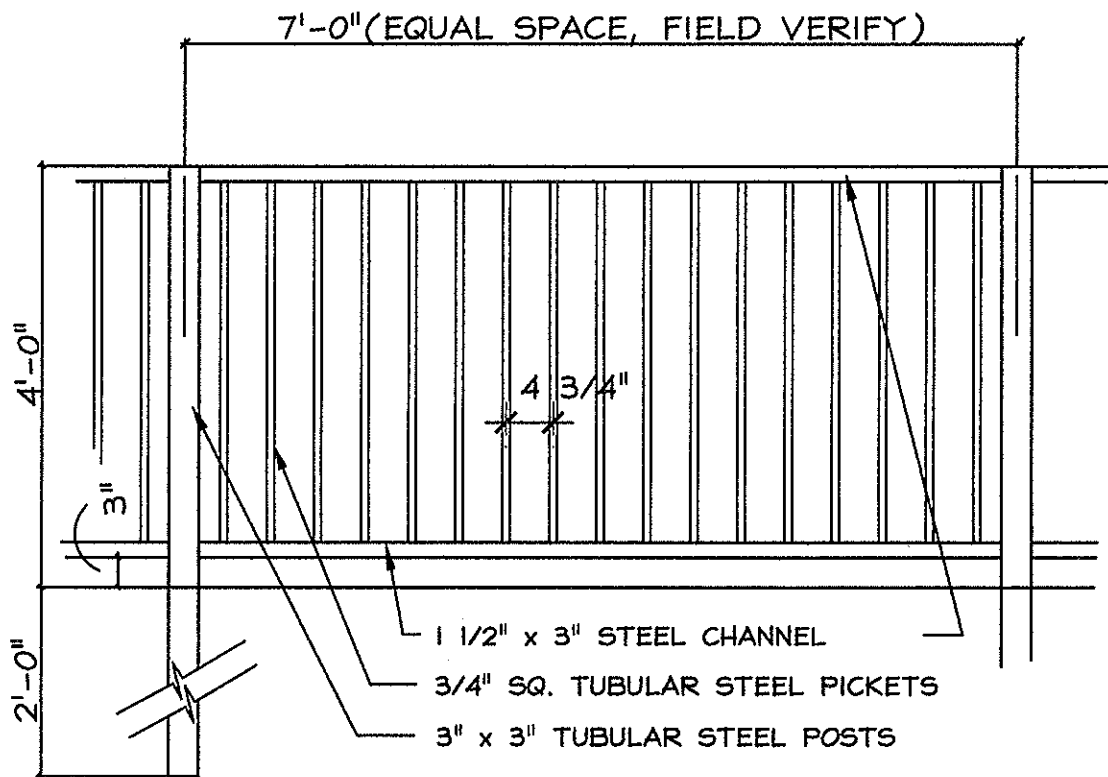
NOTE: FOR ILLUSTRATION PURPOSES ONLY.  
REFER TO CONSTRUCTION PLANS FOR  
COMPLETE DETAILS AND SPECIFICATIONS.

NOTES:

- 1) VERTICAL PICKETS TO BE NO.1, 1" X 6" CEDAR NOTCHED TOP PICKETS
- 2) ALL OTHER WOOD TO BE PRESSURE TREATED PINE
- 3) 4" X 4" POSTS TO BE APPROXIMATELY 8'-0" O.C.
- 4) PICKETS ARE TO BE ATTACHED WITH 8d GALVANIZED SCREW SHANK NAILS



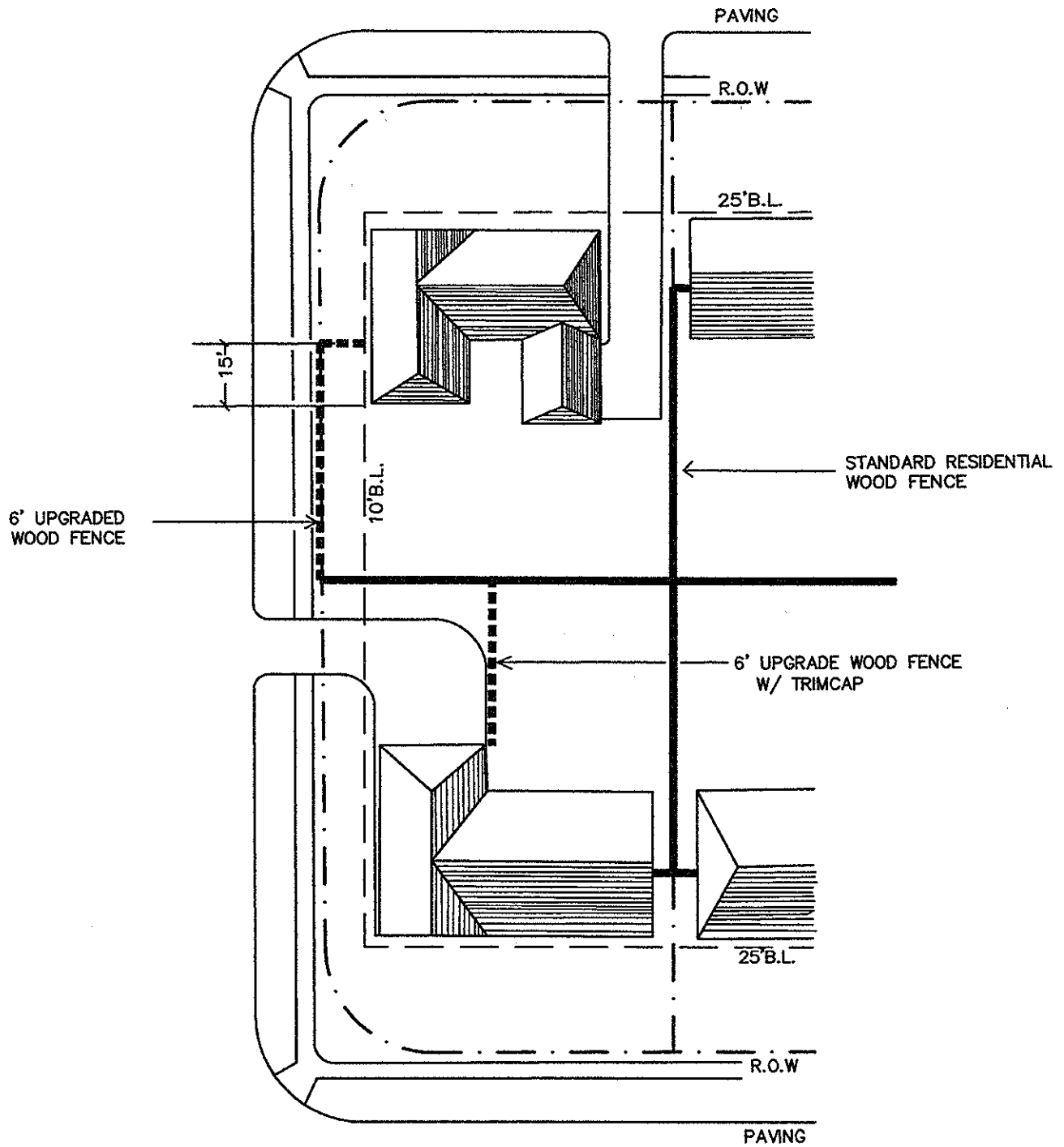
NOTE: FOR ILLUSTRATION PURPOSES ONLY.  
REFER TO CONSTRUCTION PLAN(S) FOR  
COMPLETE DETAILS AND SPECIFICATIONS.



NOTE: FOR ILLUSTRATION PURPOSES ONLY.  
 REFER TO CONSTRUCTION PLANS FOR  
 COMPLETE DETAILS AND SPECIFICATIONS.

**4' HEIGHT TUBULAR FENCE DETAIL**

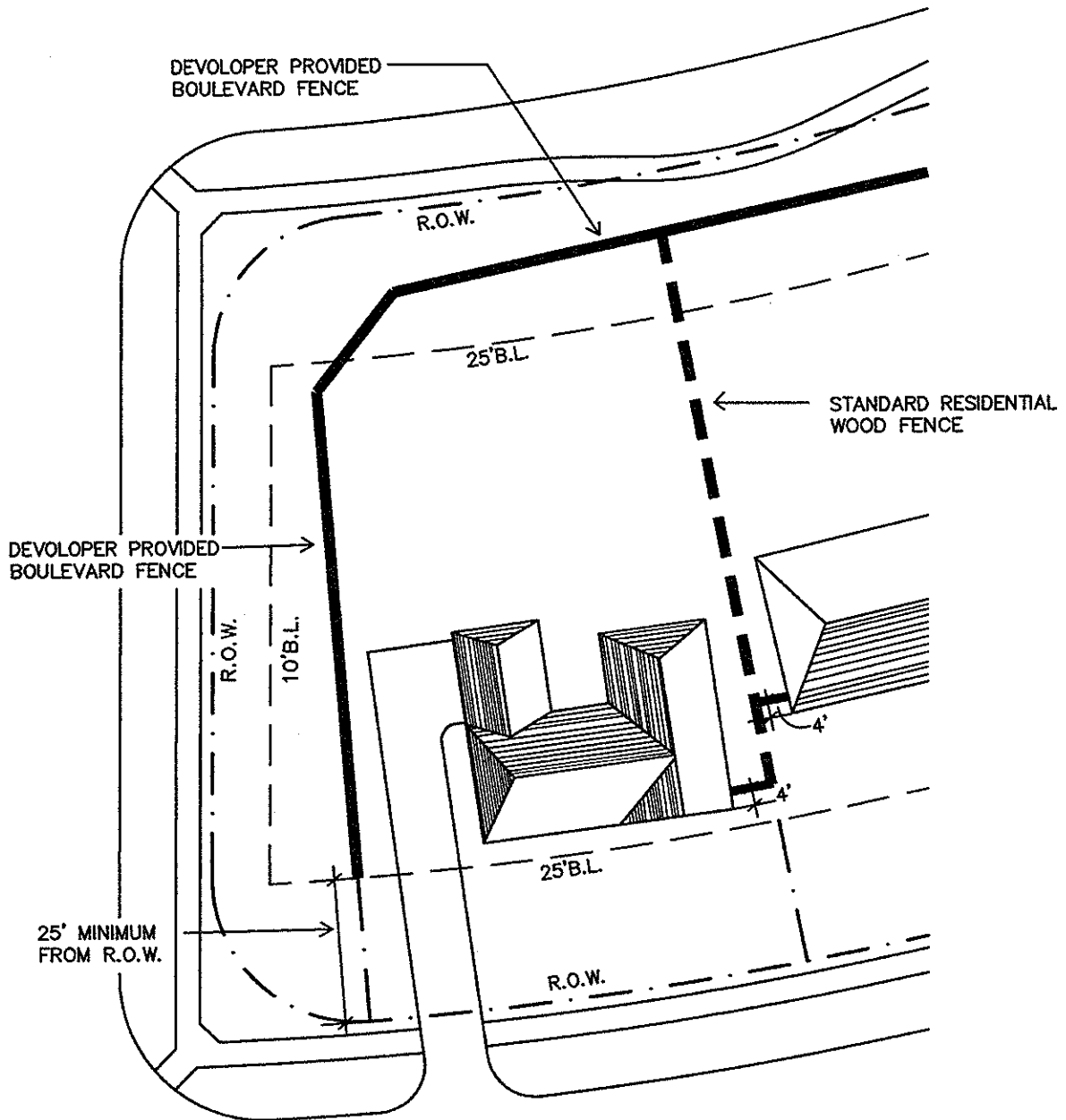
**ILLUSTRATION V-10**



**NOTE: FOR ILLUSTRATION PURPOSES ONLY.  
REFER TO CONSTRUCTION PLANS FOR  
COMPLETE DETAILS AND SPECIFICATIONS.**

**SIDELOT FENCING SETBACK/  
CORNER LOTS**

**ILLUSTRATION V-11**

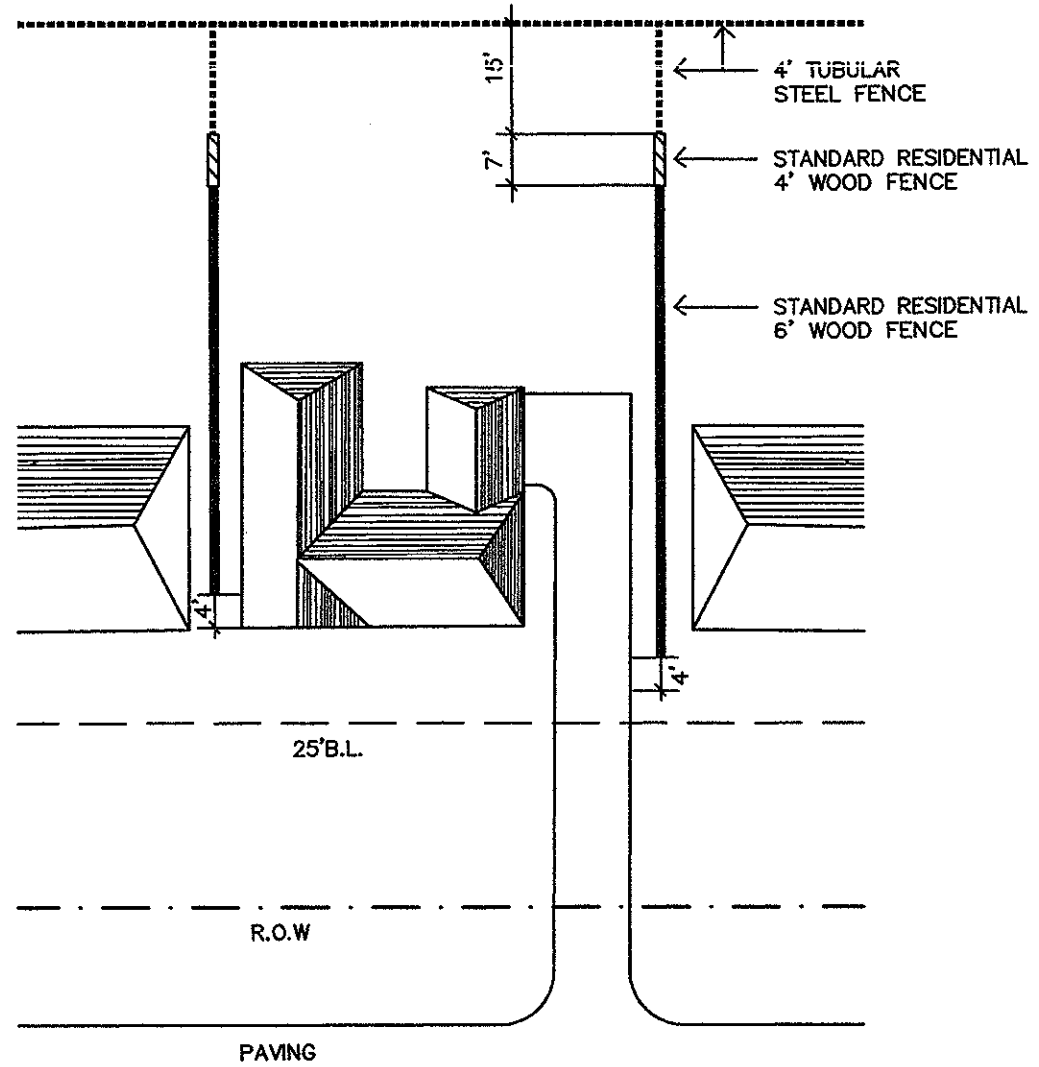


NOTE FOR ILLUSTRATION PURPOSES ONLY.  
 REFER TO CONSTRUCTION PLANS FOR  
 COMPLETE DETAILS AND SPECIFICATIONS.

**SIDEYARD FENCING -  
 VILLAGE ENTRIES**

**ILLUSTRATION V-12**

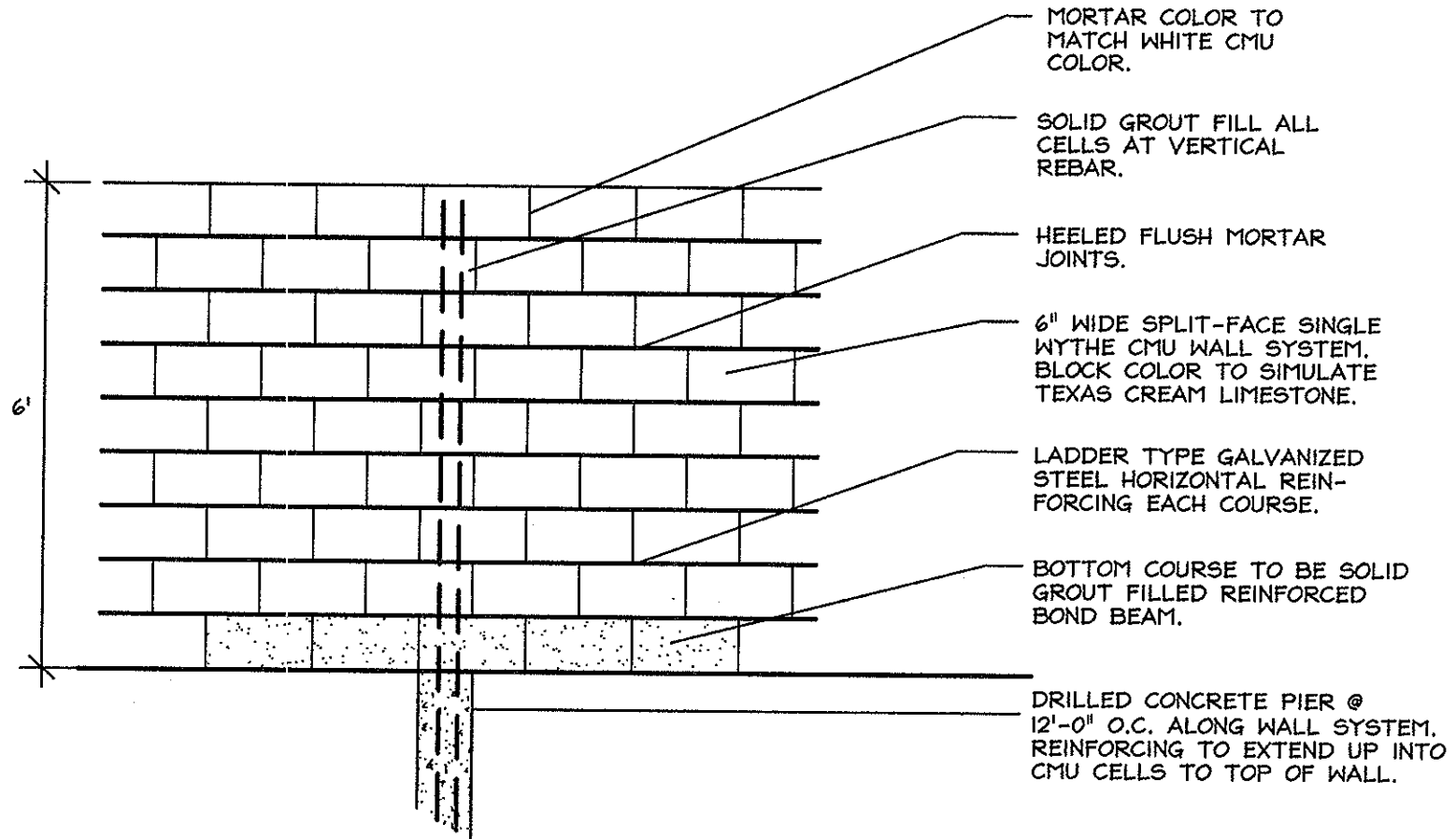
LAKE OR GOLF COURSE



NOTE: FOR ILLUSTRATION PURPOSES ONLY.  
REFER TO CONSTRUCTION PLANS FOR  
COMPLETE DETAILS AND SPECIFICATIONS.

**SIDELOT FENCING -  
LAKE/GOLF COURSE LOTS**

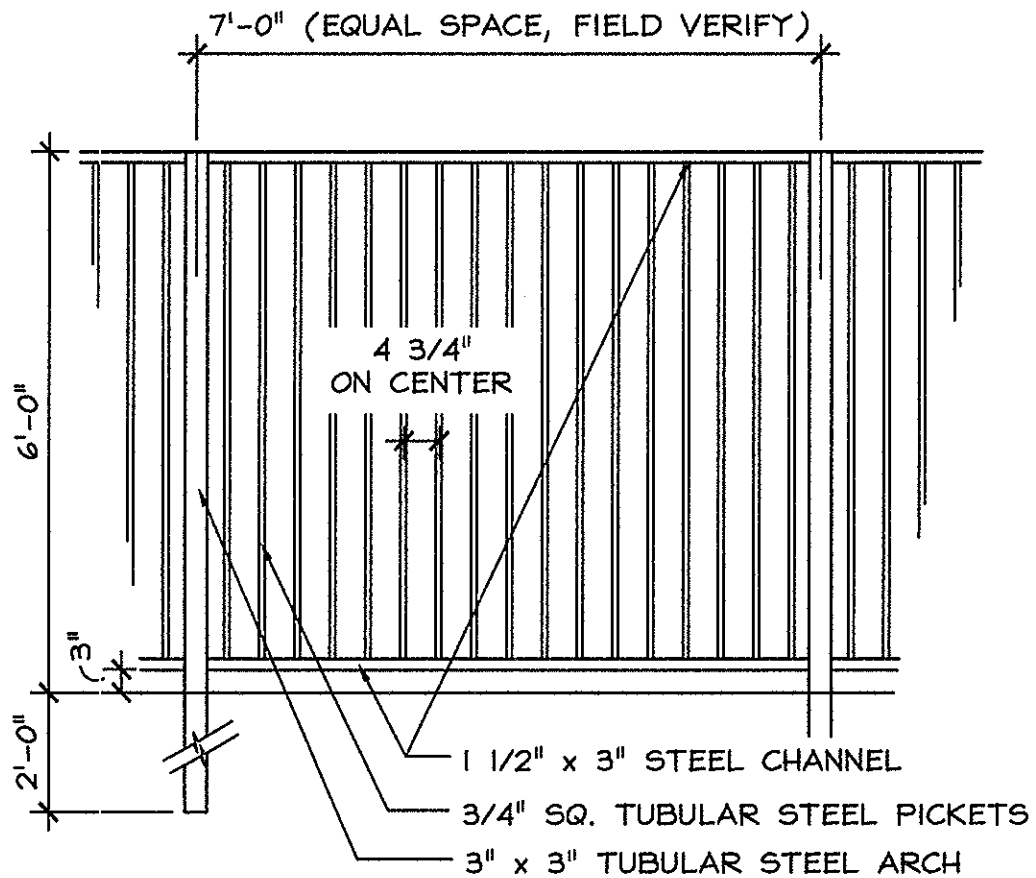
**ILLUSTRATION V-13**



**NOTE: FOR ILLUSTRATION PURPOSES ONLY.  
REFER TO CONSTRUCTION PLAN(S) FOR  
COMPLETE DETAILS AND SPECIFICATIONS.**

**6' SPLIT FACE BLOCK FENCE**

**ILLUSTRATION V-14**

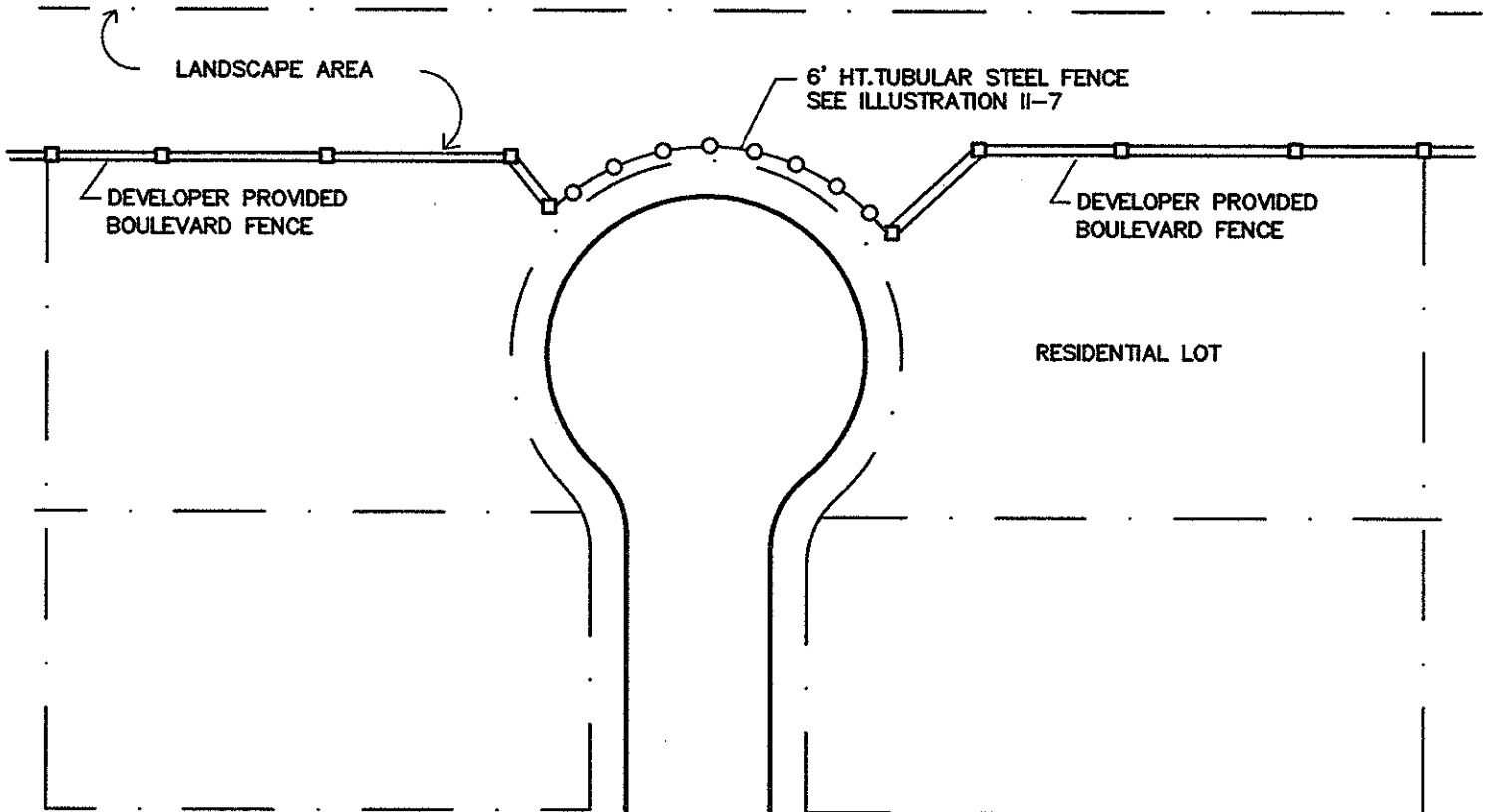


NOTE: FOR ILLUSTRATION PURPOSES ONLY.  
REFER TO CONSTRUCTION PLANS FOR  
COMPLETE DETAILS AND SPECIFICATIONS.

**6' TUBULAR FENCE DETAIL**

**ILLUSTRATION V-15**

**LOOP STREET**



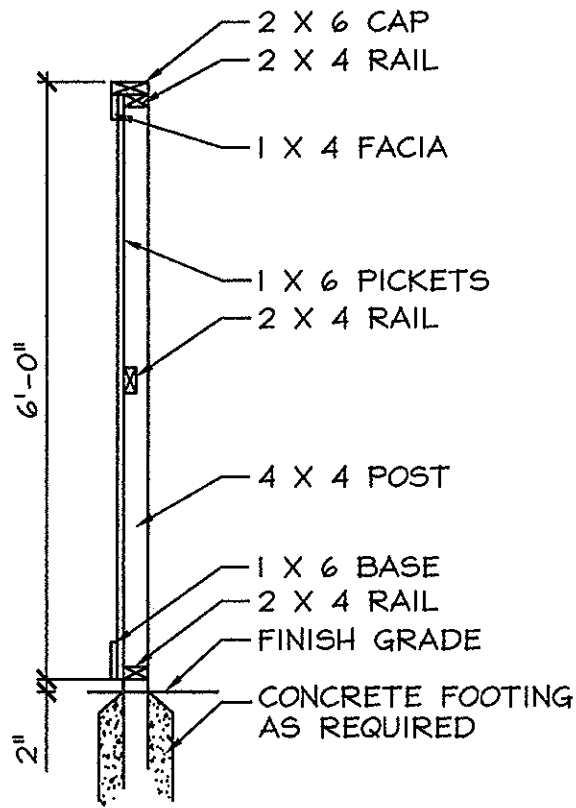
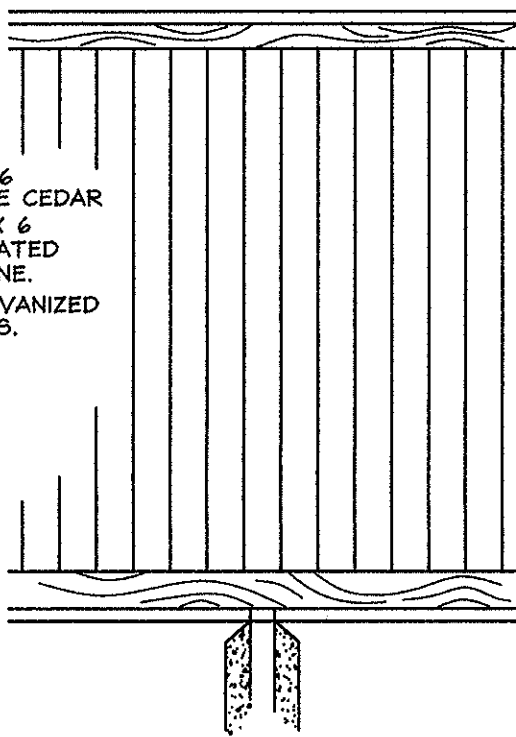
**NOTE: FOR ILLUSTRATION PURPOSES ONLY.  
REFER TO CONSTRUCTION PLANS FOR  
COMPLETE DETAILS AND SPECIFICATIONS.**

**CUL-DE-SAC OPENING  
ONTO LOOP STREET**

**ILLUSTRATION V-16**

NOTES:

1. 1 X 4 FACIA AND 1 X 6 BASE MEMBERS TO BE CEDAR
2. 4 X 4, 2 X 4, AND 1 X 6 MEMBERS TO BE TREATED SOUTHERN YELLOW PINE.
3. ALL NAILS TO BE GALVANIZED SCREW - SHANK NAILS.

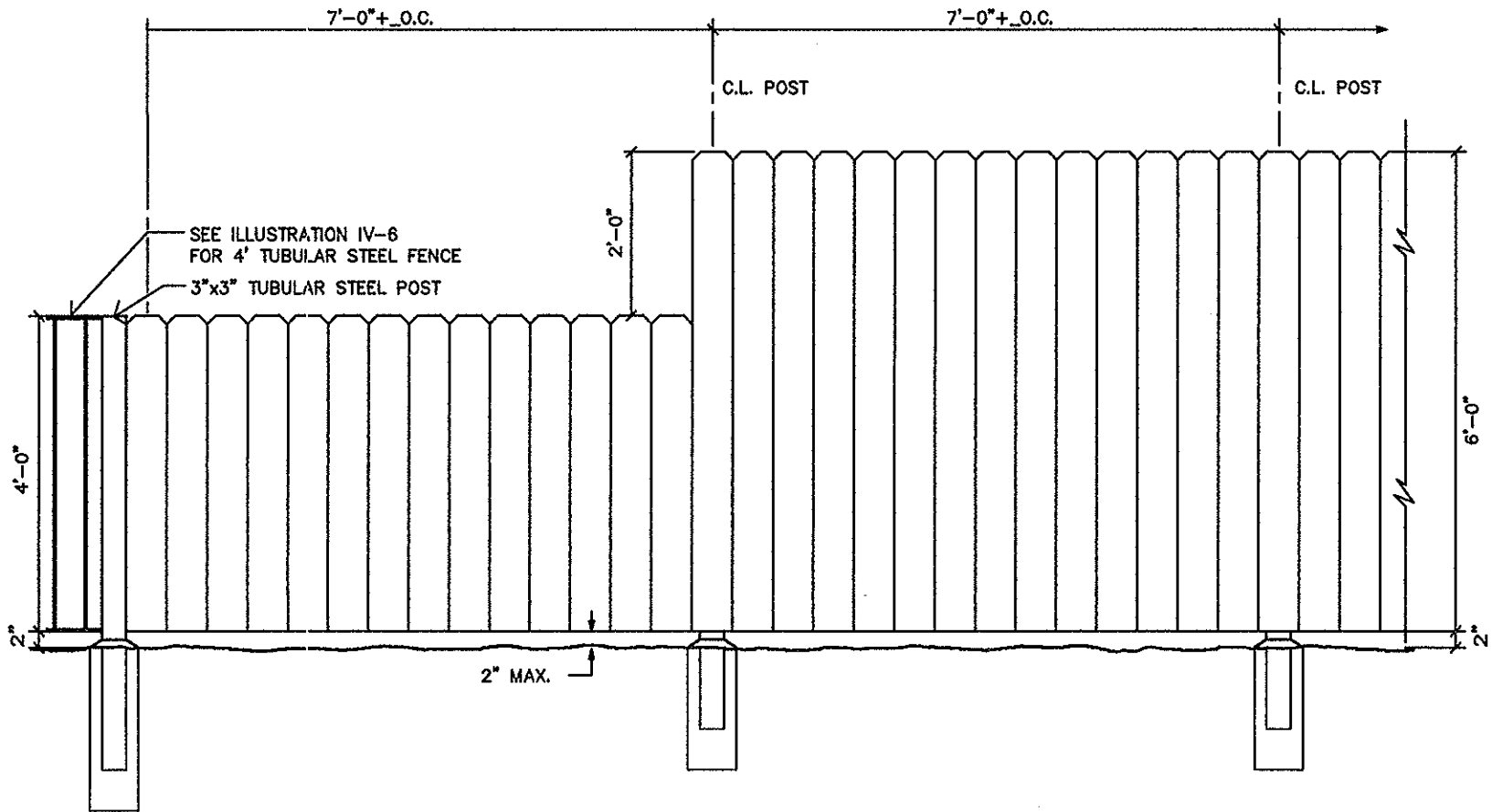


NOTE: FOR ILLUSTRATION PURPOSES ONLY.  
REFER TO CONSTRUCTION PLANS FOR  
COMPLETE DETAILS AND SPECIFICATIONS.



NOTES:

- 1) VERTICAL PICKETS TO BE NO.1, 1" X 6" CEDAR NOTCHED TOP PICKETS
- 2) ALL OTHER WOOD TO BE PRESSURE TREATED PINE
- 3) 4" X 4" POSTS TO BE APPROXIMATELY 7'-0" O.C.
- 4) PICKETS ARE TO BE ATTACHED WITH 8d GALVANIZED SCREW SHANK NAILS



NOTE: FOR ILLUSTRATION PURPOSES ONLY.  
REFER TO CONSTRUCTION PLANS FOR  
COMPLETE DETAILS AND SPECIFICATIONS.

**STANDARD RESIDENTIAL WOOD FENCE  
TRANSITION TO TUBULAR STEEL FENCE**

**ILLUSTRATION V-19**